



Holly Lodge, Tadworth
£110,000





A two bedroom park home offered to the market with no ongoing chain situated on the popular Holly Lodge development for the over 50's.





Located on the ever popular Holly Lodge development in Lower Kingswood is this well presented park home for the over 50's positioned at the end of a quiet cul-de-sac which comes to the market with no ongoing chain.

This delightful home consists of a double aspect spacious lounge / dining room, modern kitchen, two bedrooms, as well the bathroom. Outside there is a private driveway as well as storage unit and a wrap around garden.



Need to know

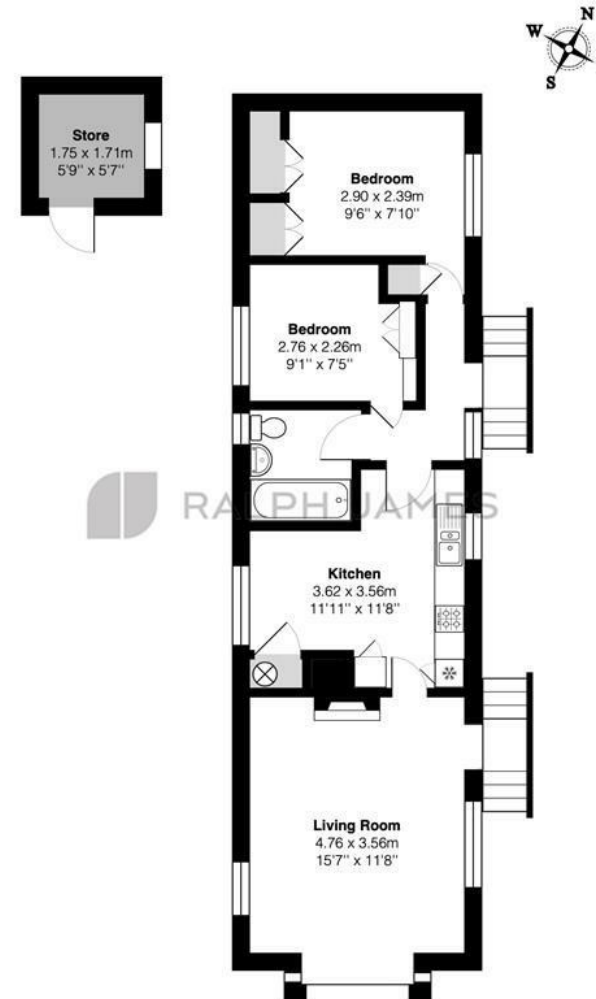
- Holly Lodge development
- Park Home
- Two bedrooms
- Double aspect lounge / dining room
- Private garden
- Driveway
- Quiet location
- Over 50's development

Interested?

banstead@ralphjames.co.uk
01737 371 700

#

ralphjames.co.uk



Sixth Avenue, Holly Lodge, Lower Kingswood, Tadworth

Total Area: 50.7 m² ... 546 ft² (excluding store)

FOR ILLUSTRATIVE PURPOSES ONLY.

Whilst every attempt has been made to ensure the accuracy of the floor plan shown, all measurements, positioning, fixtures, features, fittings and any other data shown are an approximate interpretation for illustrative purposes only and are not to scale.

No responsibility is taken for any error, omission, miss-statement or use of data shown.

The above statement applies to both 'Still Moving London LTD' and the Company or individual displaying this floor plan.

Unauthorised reproduction prohibited.

Â© Still Moving London LTD (www.stillmoving.london)

 RALPH JAMES